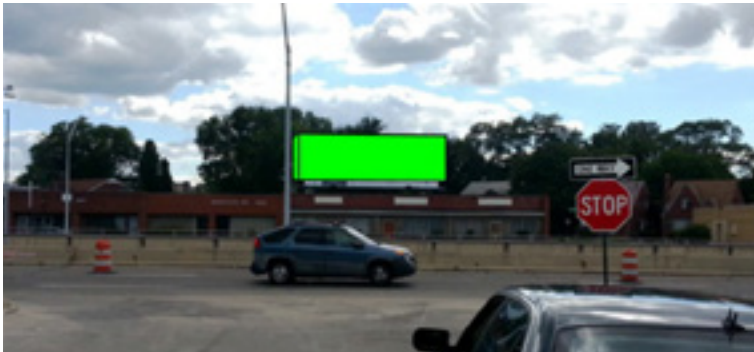




KEY ATTRIBUTES: This highly desirable cross read bulletin is on the very bus Lodge Fwy, heading north just past McNichols Rd. IT serves as a commuter route from Downtown Detroit where it ends at the very busy Northwestern Hwy, I-96 and Telegraph Rd. (US-24) interchange. Great visibility for commuters traveling to Oakland County, heading from Detroit for work, theatre district, gaming, and Detroit sports venues. This board comes with an additional 8'7" wide side. Bonus view: Lodge Fwy service drive at Curtis St.



Bonus View: Lodge Freeway at Curtis St.



Location - Value - Service

TOTAL WEEKLY IMPRESSIONS: 257,221

SIZE: 14' x 48' with 8'7" Side | SIDE: West | FACE: South

LAT: 42.422968 | LONG: -83.178662



INTERNATIONAL OUTDOOR

Main Office: 28423 Orchard Lake Rd. Suite 200, Farmington Hills, MI 48334

248.489.8989

