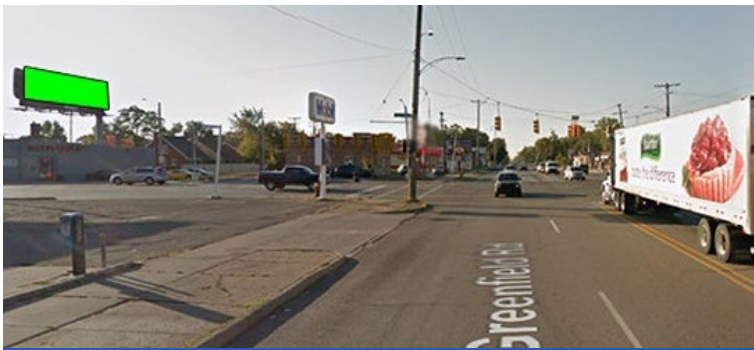




KEY ATTRIBUTES: 7 Mile Rd. and Greenfield is one of the heaviest traveled vehicle and pedestrian surface streets with great demographics in Detroit. This location is at a traffic light en route to The Lodge Freeway (M-10), across from Rite-Aid, CVS, banks, several fast food chains, and other local retail shopping. Traffic originates from West 7 Mile, Southfield Fwy. (M-39), and Telegraph Rd. (M-24) heading toward the desirable subdivisions of Sherwood Forest, Palmer Park, Palmer Woods Private Detroit Golf Club, The Avenue of Fashion, and Livernois Ave. **Bonus view:** Greenfield Rd. traveling south.



Bonus View: Greenfield North



Location - Value - Service

AGES 5+ WEEKLY IMPRESSIONS: 191,839

SIZE: 14' x 48' (illuminated) | SIDE: South | FACE: West

LAT: 42.430211 | LONG: -83.198939